

Help About: Coronavirus (Covid-19) - can my nanny work during the lockdown? UPDATE 14.05.20

The government has updated their advice about social distancing during the coronavirus pandemic and you may be wondering if this advice means you can ask your nanny to resume working in your home. NannyMatters has created a visual guide to take you through the questions you should ask, to help you decide your next steps.

Please note, this helpsheet and guide is intended to help you decide what is safe and best for your individual circumstances. It is not legal advice. You must make your own decision after careful consideration of all the facts. The situation across the UK is changing daily and this helpsheet should be used in conjunction with [government guidance](#) and other sources.

You will find our guide on page 2 of this helpsheet.

If you decide that your nanny can return to work, you must prepare for him/ her working in your home with as many precautions as possible.

These precautions could include:

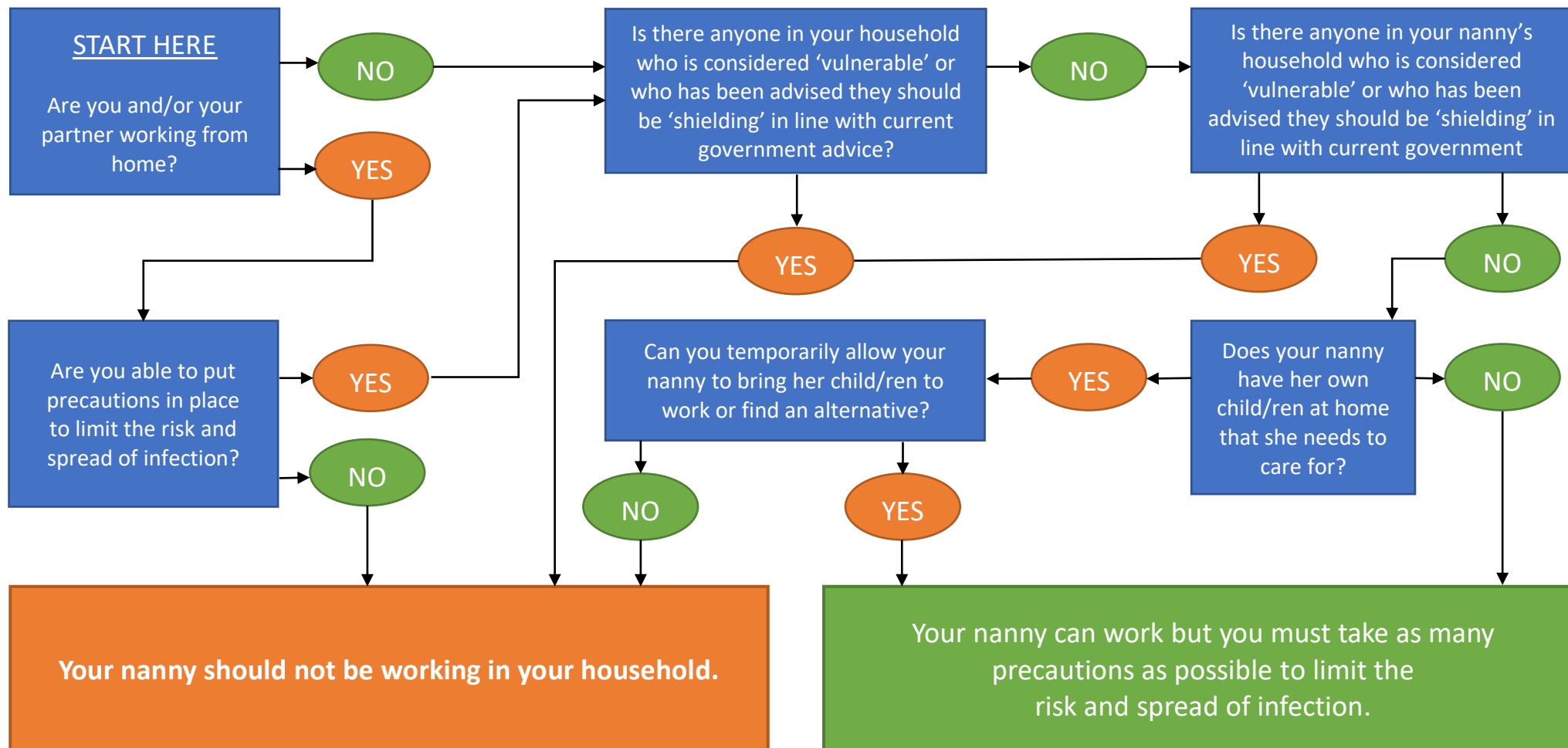
- Helping your nanny to avoid using public transport if that is his/ her usual way to travel to your home, by subsidising taxi journeys instead, or picking up/ dropping off in your car or lending a car overnight. Could you stagger his/ her start and finish time to avoid peak times?
- Providing adequate handwashing facilities and/ or a separate bathroom for your nanny to use
- Providing gloves and/ or a face mask and tissues, as well as cleaning products for surfaces, door handles etc.
- Limiting contact and/ or keeping a 2m distance between your nanny and anyone in your home other than the child/ren being cared for
- Restricting the number of shared areas that you and your nanny will use
- Frequently cleaning and disinfecting surfaces that are touched regularly
- Reassuring your nanny how you are taking precautions and maintaining social distancing when you are away from your home

IMPORTANT NOTE

If anyone in your household or your nanny's household shows [symptoms of Covid-19](#) or has been advised to self-isolate through contact tracing, your nanny **must not continue to come to work**. Your or his/her household should self-isolate in accordance with [government advice](#). If the symptoms are in your nanny's household, he/she is entitled to SSP. If the symptoms are in your household, your nanny should receive full pay as normal.

Please refer to our previous helpsheet (updated 20.4.20) for details about SSP, furloughing your nanny through the Job Retention Scheme and ending the employment contract if necessary.

Can your nanny care for your children in your home during the Covid-19 lockdown?



Please note, this guide is intended to help you decide what is safe and best for your individual circumstances. It is not legal advice. You must make your own decision after careful consideration of all the facts.

IMPORTANT NOTE
 If anyone in your or your nanny's household shows symptoms of COVID-19, or has been advised to self-isolate through contact tracing, your nanny should not continue to come to work. Your or his/her household should self-isolate in accordance with government advice. If the symptoms are in your nanny's household, he/she is entitled to SSP. If the symptoms are in your household, your nanny should receive full pay as normal.

